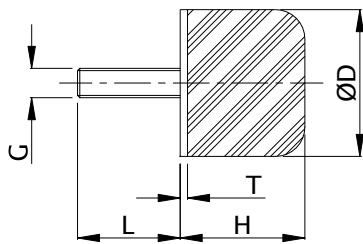


Stop Buffers



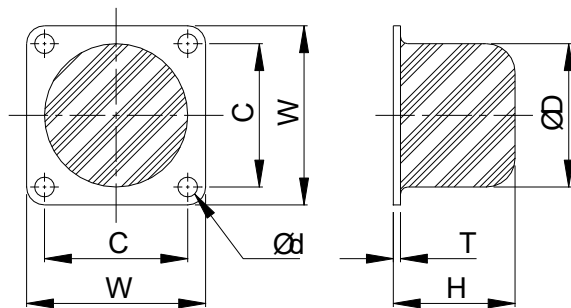
Suitable for absorbing high shock loads, stop buffers are available with either a mounting plate or a single fixing stud. A range of sizes is available with many held in stock. Standard parts are manufactured in natural rubber 71° Shore A.

Stop Buffer with stud



Part No.	ØD (mm)	H (mm)	G	L (mm)	T (mm)
STOP-BF1000-71	40	34	M8	28	2
STOP-BF1001-71	50	42	M10	33	2
STOP-BF1002-71	63	53	M10	32	3
STOP-BF1003-71	80	66	M12	37	3
STOP-BF1004-71	100	84	M12	36	4
STOP-BF1005-71	125	104	M16	46	4
STOP-BF1006-71	160	131	M16	44	6
STOP-BF1007-71	200	166	M20	49	6
STOP-BF1008-71	250	208	M20	47	8

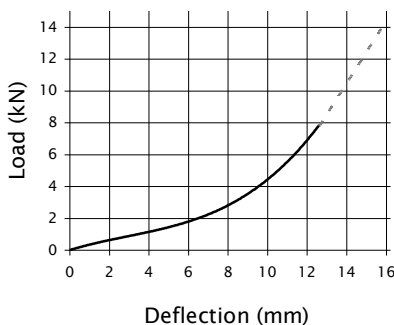
Stop Buffer with Plate



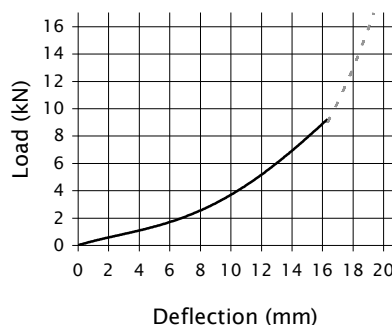
Part No.	ØD (mm)	H (mm)	t (mm)	W (mm)	C (mm)	Ød (mm)
STOP-RB1069-71	40	34	2	50	40	5.5
STOP-RB1070-71	50	42	2	63	50	6.5
STOP-RB1071-71	63	53	3	80	63	6.5
STOP-RB1072-71	80	66	3	100	80	9
STOP-RB1073-71	100	84	4	125	100	9
STOP-RB1074-71	125	104	4	160	125	11
STOP-RB1075-71	160	131	6	200	160	11
STOP-RB1076-71	200	166	6	250	200	13
STOP-RB1077-71	250	208	8	315	250	13

Compression Characteristics

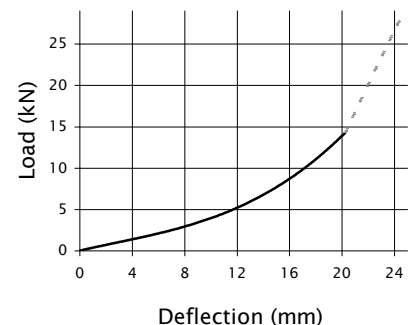
STOP-RB1069 & STOP-BF1000



STOP-RB1070 & STOP-BF1001



STOP-RB1071 & STOP-BF1002

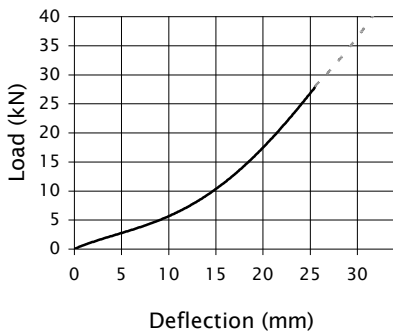


Note: The Load/Deflection graphs are for standard loads up to 40% strain, the dotted line is for occasional shock loads up to 50% strain

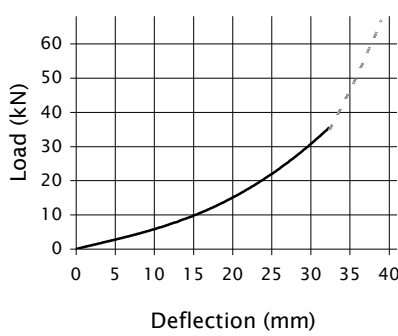
Note: There is a possible deviation of ±20% in the above load/deflection graphs due to production and hardness tolerances

Compression Characteristics Cont'd

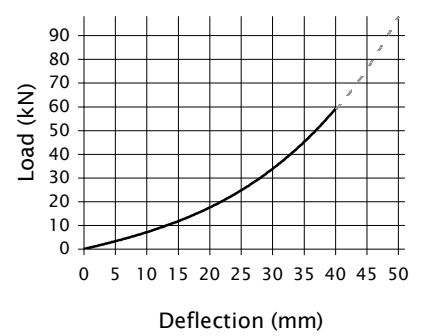
STOP-RB1072 & STOP-BF1003



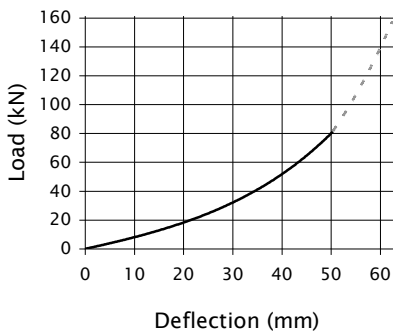
STOP-RB1073 & STOP-BF1004



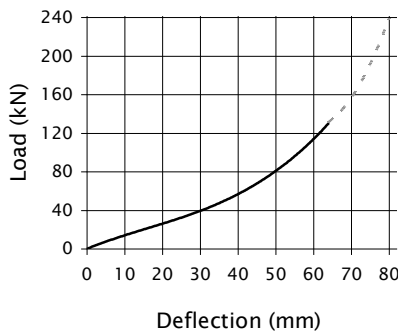
STOP-RB1074 & STOP-BF1005



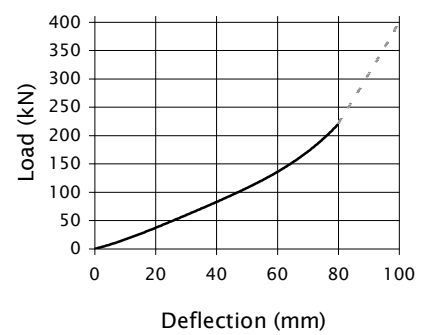
STOP-RB1075 & STOP-BF1006



STOP-RB1076 & STOP-BF1007



STOP-RB1077 & STOP-BF1008



Note: The Load/Deflection graphs are for standard loads up to 40% strain, the dotted line is for occasional shock loads up to 50% strain

Note: There is a possible deviation of $\pm 20\%$ in the above load/deflection graphs due to production and hardness tolerances