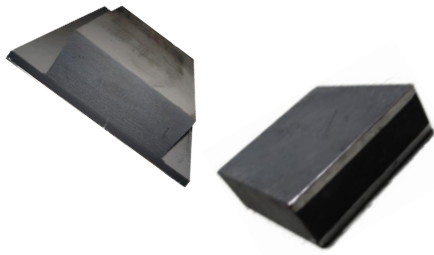
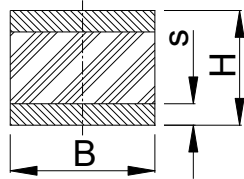


## Rails



These parts are specially manufactured in two metre lengths from a wide range of sizes and designs for which tooling is available. All parts can be supplied cut to size and drilled or tapped to suit the specific application.

### Type A



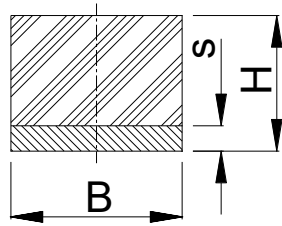
Compounds Produced: 40° Shore A (Soft)  
(Natural Rubber) 55° Share A (Medium)  
70° Shore A (Hard)

**Note: Manufactured in Two Metre Lengths**

Breadth B (mm)	Height H (mm)	Plate Thickness s (mm)
20	30	5, 8, 10
25	25	5, 8, 10
25	30	5, 8, 10
30	25	5, 8, 10
30	30	5, 8, 10
40	20	
40	35	5, 8
40	40	10, 15
40	45	
50	35	
50	40	
50	45	5, 8
50	50	10, 15, 20
50	55	
50	60	
50	70	
60	30	
60	35	
60	40	5, 8
60	50	10, 15, 20
60	60	
60	80	
70	30	
70	40	
70	45	
70	50	5, 8
70	55	10, 15, 20
70	60	
70	70	
70	80	

Breadth B (mm)	Height H (mm)	Plate Thickness s (mm)
80	45	
80	60	5, 8
80	80	10, 15, 20
90	45	5, 8, 10, 15, 20
100	20	
100	30	
100	40	
100	45	
100	50	5, 8
100	55	10, 15, 20
100	60	
100	65	
100	70	
100	80	
120	45	
120	50	
120	60	5, 8
120	70	10, 15, 20
120	80	
150	50	
150	60	
150	65	5, 8
150	70	10, 15, 20
150	80	
150	100	
200	80	5, 8
200	100	10, 15, 20
250	100	5, 8, 10, 15, 20
300	100	5, 8, 10, 15, 20
400	100	5, 8, 10, 15, 20

## Type F



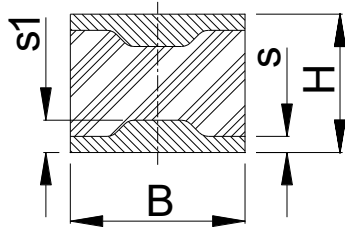
Compounds Produced: 40° Shore A (Soft)  
 (Natural Rubber) 55° Share A (Medium)  
 70° Shore A (Hard)

**Note: Manufactured in Two Metre Lengths**

Breadth B (mm)	Height H (mm)	Plate Thickness s (mm)
20	30	5, 8, 10, 15
25	25	5, 8, 10, 15
25	30	
30	25	5, 8, 10
30	30	
40	20	5, 8 10, 15, 20
40	35	
40	40	
40	45	
40	45	
50	35	5, 8 10, 15, 20
50	40	
50	45	
50	50	
50	55	
50	60	
50	70	
60	30	5, 8 10, 15, 20
60	35	
60	40	
60	50	
60	60	
60	80	
70	30	5, 8 10, 15, 20
70	40	
70	45	
70	50	
70	55	
70	60	
70	70	
70	70	
70	80	

Breadth B (mm)	Height H (mm)	Plate Thickness s (mm)
80	45	5, 8 10, 15, 20
80	60	
80	80	
90	45	5, 8, 10, 15, 20
100	20	5, 8 10, 15, 20
100	30	
100	40	
100	45	
100	50	
100	55	
100	60	
100	65	
100	70	
100	80	
120	45	5, 8 10, 15, 20
120	50	
120	60	
120	70	
120	80	5, 8 10, 15, 20
150	50	
150	60	
150	65	
150	70	
150	80	
150	100	5, 8 10, 15, 20
200	80	
200	100	5, 8, 10, 15, 20
250	100	5, 8, 10, 15, 20
300	100	5, 8, 10, 15, 20
400	100	5, 8, 10, 15, 20

## Type A11

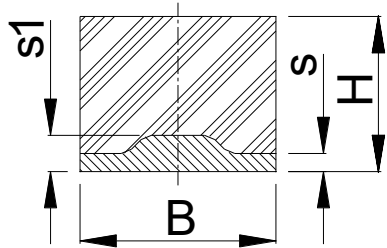


Compounds Produced: 40° Shore A (Soft)  
 (Natural Rubber) 55° Share A (Medium)  
 70° Shore A (Hard)

**Note: Manufactured in Two Metre Lengths**

Breadth B (mm)	Height H (mm)	Plate Thickness s (mm) s1	
		s	s1
50	35	5	10
50	40	5	10
50	45	5	10
50	50	5	10
50	55	5	10
50	60	5	10
50	70	5	10
60	36	5	11
60	60	5	11
70	30	5	12
70	45	5	12
70	55	5	12
70	60	5	12
70	70	5	12
70	80	5	12
100	40	5	15
100	45	5	15
100	50	5	15
100	55	5	15
100	60	5	15
100	70	5	15
100	80	5	15

## Type F11

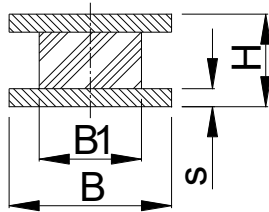


Compounds Produced: 40° Shore A (Soft)  
 (Natural Rubber) 55° Share A (Medium)  
 70° Shore A (Hard)

**Note: Manufactured in Two Metre Lengths**

Breadth B (mm)	Height H (mm)	Plate Thickness s (mm) s1	
		s	s1
50	35	5	10
50	40	5	10
50	45	5	10
50	50	5	10
50	55	5	10
50	60	5	10
50	70	5	10
60	36	5	11
60	60	5	11
70	30	5	12
70	45	5	12
70	55	5	12
70	60	5	12
70	70	5	12
70	80	5	12
100	40	5	15
100	45	5	15
100	50	5	15
100	55	5	15
100	60	5	15
100	70	5	15
100	80	5	15

## Type B

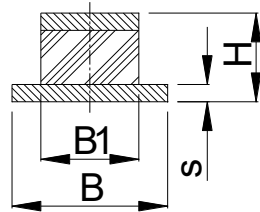


Compounds Produced: 40° Shore A (Soft)  
(Natural Rubber) 55° Share A (Medium)  
70° Shore A (Hard)

**Note: Manufactured in Two Metre Lengths**

Sizes Available Are As For Rail Type A

## Type C

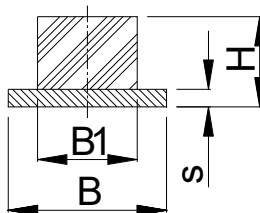
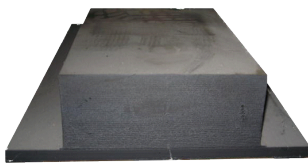


Compounds Produced: 40° Shore A (Soft)  
(Natural Rubber) 55° Share A (Medium)  
70° Shore A (Hard)

**Note: Manufactured in Two Metre Lengths**

Sizes Available Are As For Rail Type A

## Type D

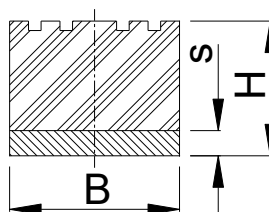


Compounds Produced: 40° Shore A (Soft)  
(Natural Rubber) 55° Share A (Medium)  
70° Shore A (Hard)

**Note: Manufactured in Two Metre Lengths**

Sizes Available Are As For Rail Type A

## Profiled

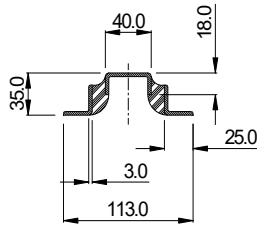


Compounds Produced: 40° Shore A (Soft)  
(Natural Rubber) 55° Share A (Medium)  
70° Shore A (Hard)

**Note: Manufactured in Two Metre Lengths**

Sizes Available Are As For Rail Type A

## Type U



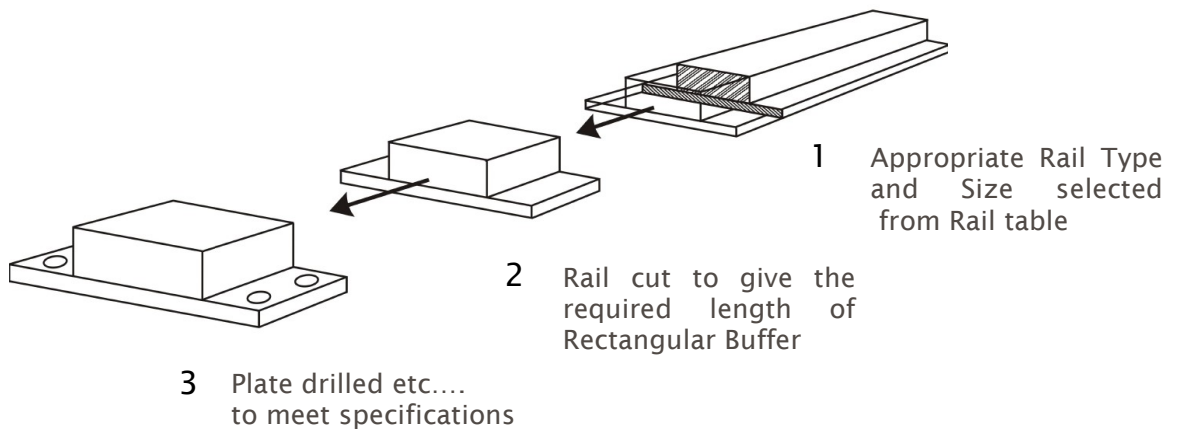
Compounds Produced: 40° Shore A (Soft)  
(Natural Rubber) 55° Share A (Medium)  
70° Shore A (Hard)

**Note: Manufactured in Two Metre Lengths**

Part No. RAIL-U-RA1554

## Rectangular Buffers Cut From Rail

It is possible to manufacture Rectangular Buffers from Rail as illustrated. The rail can be supplied as manufactured in 2 metre lengths, or can be cut and drilled to meet the customer's individual requirement. This process has the added advantage that no tooling is normally required



## Mountings Cut From Rail

It is possible to Manufacture Mountings from Rail as illustrated. The rail can be supplied as manufactured in 2 metre lengths, or can be cut and drilled to meet the customer's individual requirement. This process has the added advantage that no tooling is normally required.

