

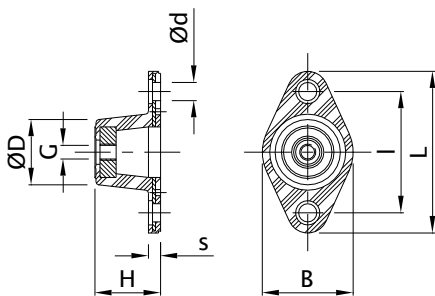


Isolators

A range of sizes is available with many held in stock. Standard parts are manufactured in coloured natural rubber.

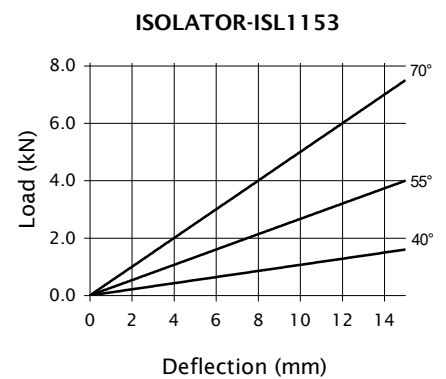
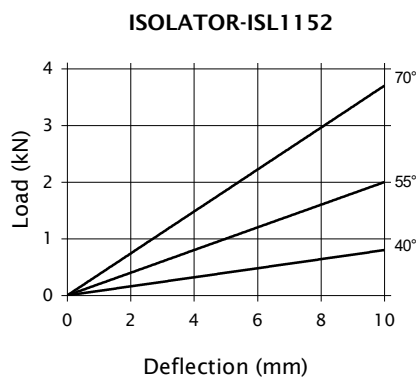
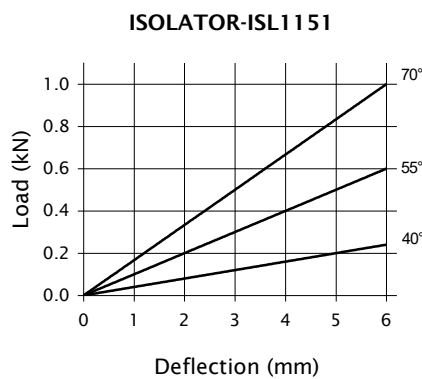
- 40° Shore A (soft—colour coded green)
- 55° Shore A (medium—colour coded red)
- 70° Shore A (hard—colour coded beige)

Dimensions



Part No.	L (mm)	I (mm)	B (mm)	ØD (mm)	H (mm)	s (mm)	Ød (mm)	G
ISOLATOR- ISL1151	80.0	60.0	45.0	32.0	32.0	6.0	9.0	M8
ISOLATOR- ISL1152	98.0	76.0	60.0	45.0	46.0	6.0	9.0	M10
ISOLATOR- ISL1153	140.0	105.0	86.0	63.0	73.0	6.5	14.0	M12

Compression Characteristics



Note: There is a possible deviation of ±20% in the above load/deflection graphs due to production and hardness tolerances