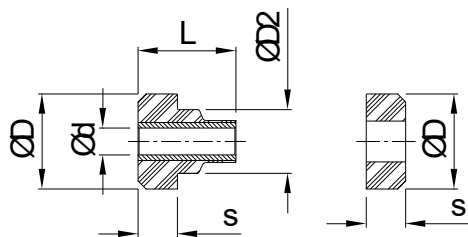


H Mountings



Standard parts are manufactured in chloroprene rubber and have resistance to oils and greases. Please see sketches below for typical captive installations. Please contact us for rubber hardnesses that are not shown on the stiffness graphs. Minimum order quantities may apply unless parts are available from stock.

Dimensions



Part No.	ØD (mm)	L (mm)	Ød (mm)	s (mm)	ØD2 (mm)
H-MTG1964	33.2	31.7	10.4	12.3	20.1
H-MTG2106	47.7	49.2	13.5	19.8	32.0
H-MTG1936	47.7	49.2	13.5	19.8	33.0
H-MTG1937	64.8	61.7	16.8	22.9	40.1
H-MTG2191	89.0	73.4	23.8	26.0	57.0

Example of Installation

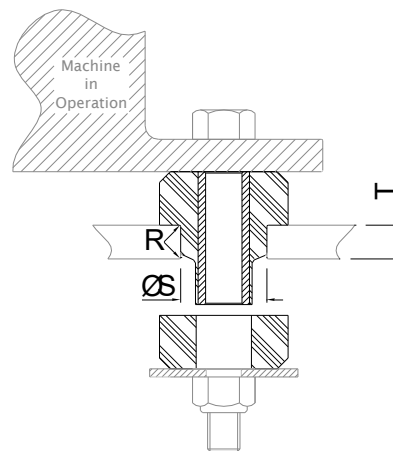
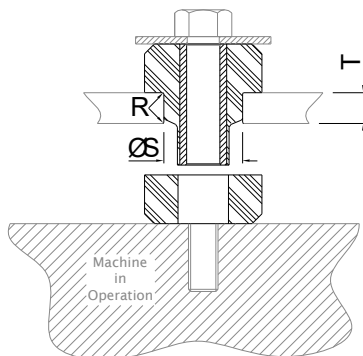
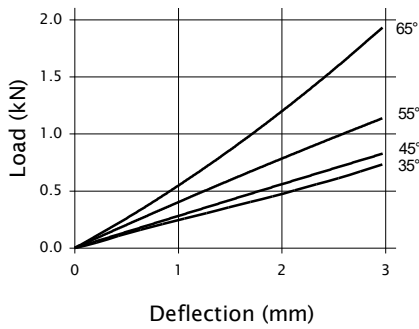


Table of Installation Dimensions

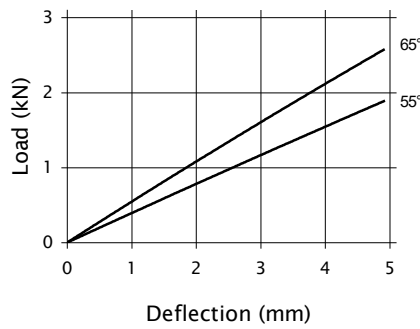
Part No.	ØS (Support Structure)	T (Support Structure)	R (Support Structure)
	(mm)	(mm)	(mm)
H-MTG1964	19.0	9.5	1.0
H-MTG2106	31.0	12.5-14.0	1.5
H-MTG1936	31.7	12.5-14.0	1.5
H-MTG1937	38.1	19.1-22.2	2.3

Compression Characteristics

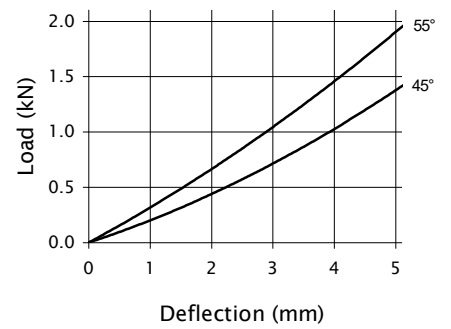
H-MTG1964 - AXIAL



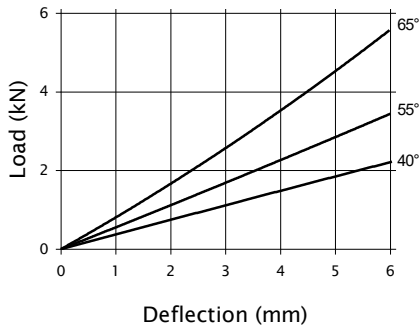
H-MTG2106 - AXIAL



H-MTG1936 - AXIAL



H-MTG1937 - AXIAL



Note: There is a possible deviation of $\pm 20\%$ in the above load/deflection graphs due to production and hardness tolerances